

CROSSING BORDERS, CONQUERING MARKETS

Dutch-Singapore Deep-Tech Expansion 2026



HIGH
TECH XL

DUTCH

SINGAPORE

DEEP-TECH

EXPANSION

ATUM



CONTENT

1. About the Program
2. About HTXL & SDTA
3. Program Value
4. Focus Areas
5. Program Timeline
6. Application Timeline & Process

CROSSING BORDERS, CONQUERING MARKETS

Dutch-Singapore Deep-Tech Expansion

→ Expand to Eindhoven

Designed for Singapore-based deep-tech startups to **expand and enter Eindhoven, The Netherlands**

This Program offers Singapore startups an unparalleled launchpad to establish and scale their presence in Eindhoven's thriving deep tech hub, working alongside leading players in R&D and collaborating on developing future-oriented technologies.

→ Expand to Singapore

Designed for Dutch-based deep-tech startups to **expand and enter Singapore**

This Program offers Dutch startups a platform to successfully expand and enter the Singapore, at the heart of South-East Asia's Deep Tech ecosystem. Singapore offers many opportunities for technical development, industry connections and funding possibilities.



HighTechXL is a deep-tech venture builder that builds teams of entrepreneurs and tech talents around the most advanced technologies in the world. We merge the unique skills of our global ecosystem with deep tech and entrepreneurship. We support teams with essential resources, such as investors, advisors and customers.

Our ecosystem includes HTXL founding partners Philips, ASML, TNO, BOM and High Tech Campus Eindhoven as well as startup centers, tech experts, business leaders and stakeholders across the globe, including HighTechXL partner Singapore Deep-Tech Alliance, Rise Europe and technology partners in the Netherlands, Switzerland, France, Canada, Poland and beyond.

154

Startups Supported
(Acceleration + Venture Building)

27

Cross-border
collaborations

98

Startups set up an entity
in NL

€171M

Amount of Investment
Raised through Programs

19

Program and Ecosystem
Partners

9

Tech Partners



ATUM is a deep-tech innovation platform and venture builder that aims to help entrepreneurs bring advanced technologies to market and support foreign deep-tech companies to successfully penetrate the Singaporean and SEA markets.

ATUM combines unique deep-tech expertise with a broad network of partners including Corporate Alliance partners, VC's and RI partners.

50+

Startups Supported
(Acceleration + Venture Building)

460

Business
Intros made

5

. Startups set up an entity
in Singapore

\$8M

Amount of Investment
Raised through Programs

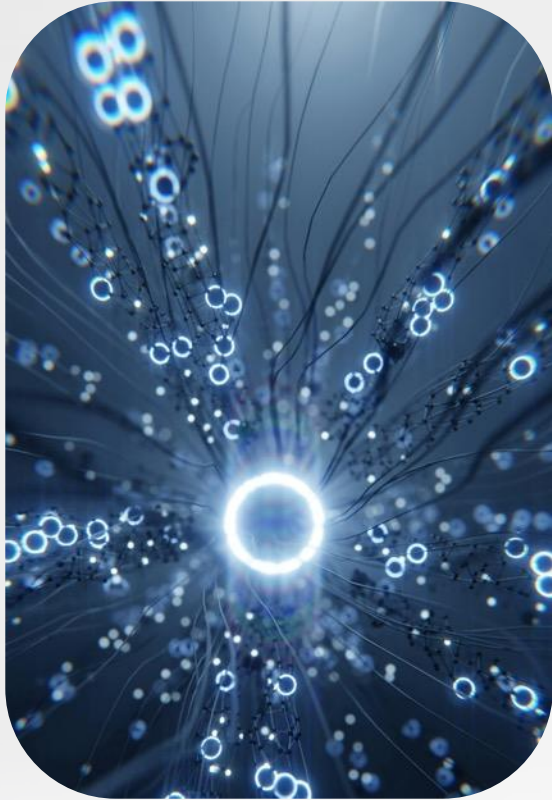
13

Corporate Partners

6

RI Partners

We focus on deep-tech startups and scale-ups that...



are active in advanced
manufacturing,
clean-tech, health
tech or energy



have raised **at**
least seed
funding



have **demonstrated**
traction through
financing and customer
engagement



have a strong
interest to expand
internationally

Program Value

Tailored Guidance for Market Entry

Guidance and coaching by experienced mentors and entrepreneurs-in-residence (EIR) for personalized advice on go-to-market, pricing and pitching strategy, and more

Regulatory Understanding

Deep dives into specific industry regulatory landscape to navigate complex European and Singaporean regulations, avoiding potential pitfalls

Business Introductions

Introductions to potential customers, partners, industry stakeholders for market exploration, product validation and business development

Access to Investors and Corporates

Pitch to a curated audience of investors, corporates and industry stakeholders at demo day

Market, Industry and Business Knowledge

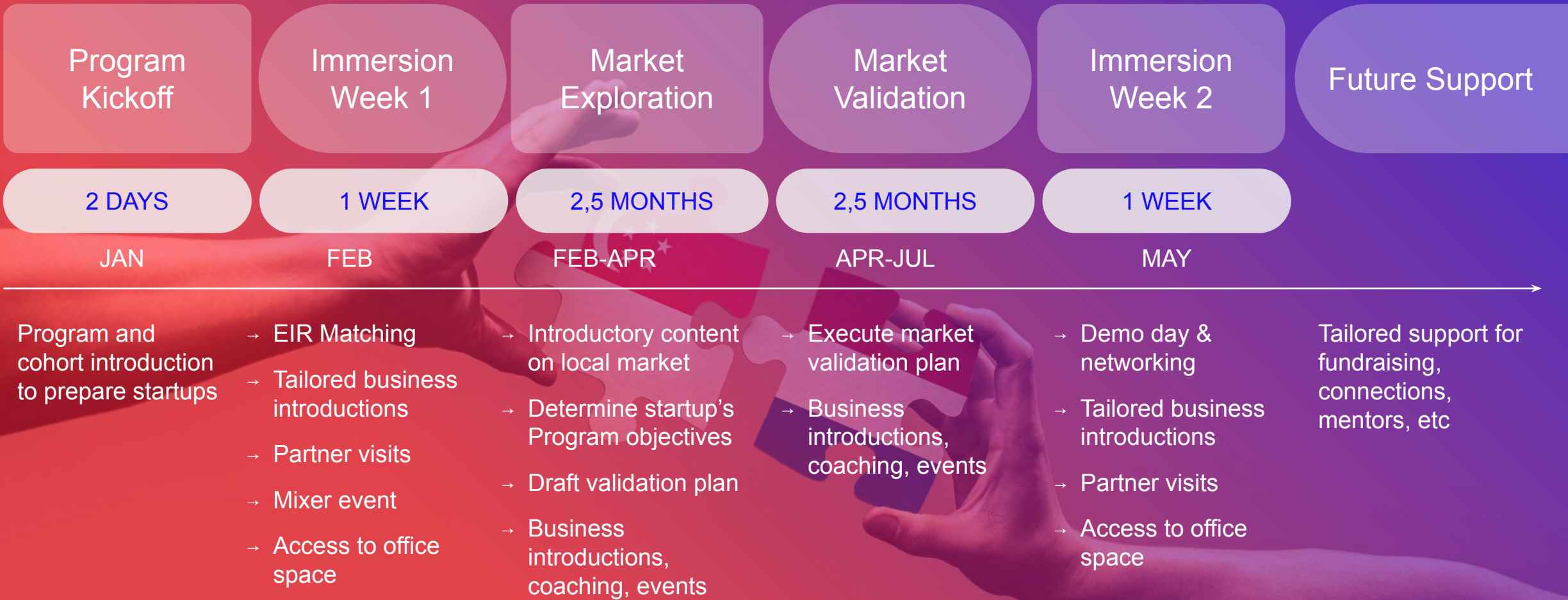
Deep insights to localizing and business operation through tailored content and mentorship

Access to Other Resources

Co-working space, PR & marketing support, networking events, alumni events, partner perks, and more

Program Timeline

Late Jan - Early Jul 2026



CROSSING BORDERS, CONQUERING MARKETS

Application Timeline & Process

APPLICATION

→ **Closes 31 Oct 2025**

INTERVIEW & SELECTION

→ **Nov 2025 - Dec 2025**

PROGRAM COMMENCEMENT

→ **Jan 2026**

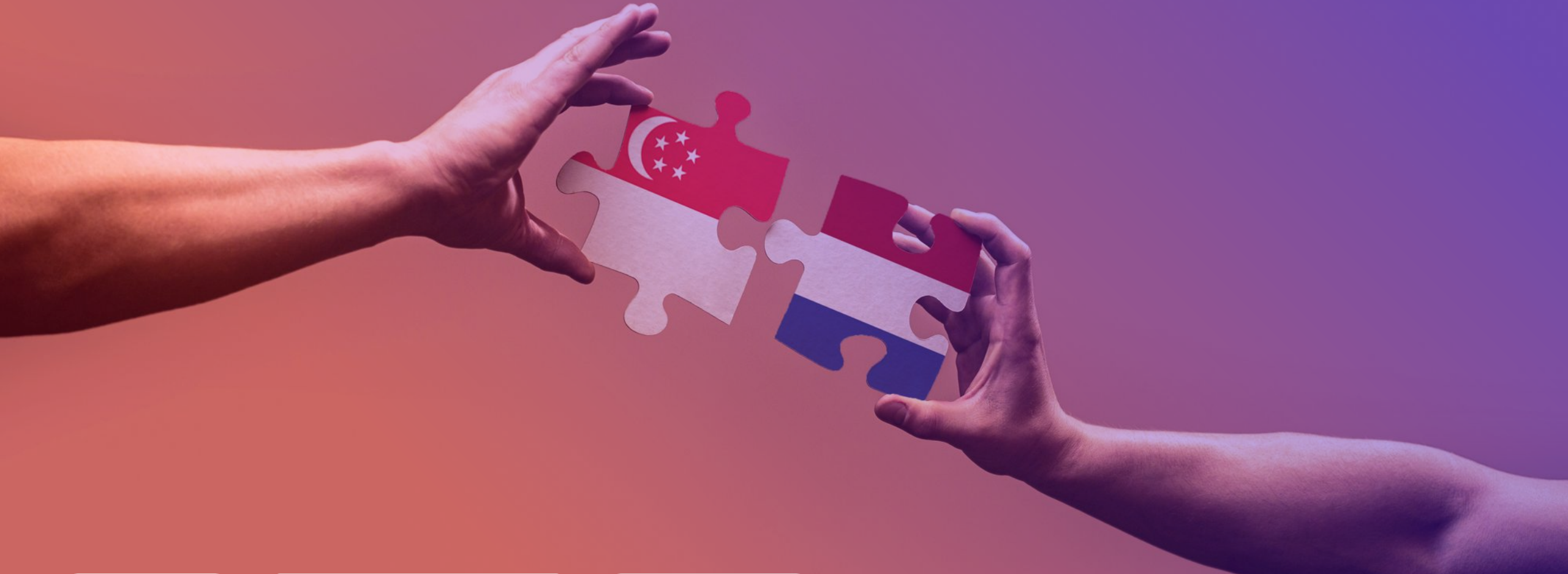
→
[Submit your
application here](#)

Please refer to the [Program FAQs](#) for more details.

If you have further questions, please contact us at
singapore@hightechxl.com

THANK YOU!

 singapore@hightechxl.com



**HIGH
TECH XL**

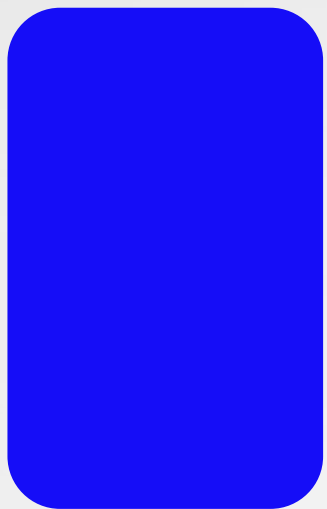
DUTCH

SINGAPORE

DEEP-TECH

EXPANSION

ATUM



HTXL BLUE

#150DF7



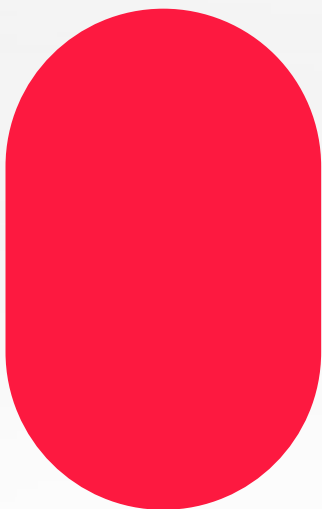
HTXL BLUE

50%
TRANSPARENT



HTXL RED

#FD1940



HTXL RED

0%
TRANSPARENT

